



EXCEL
EQUINE®

For more information or ordering
details please contact:

(800) 295-2836

(502) 587-6606

INFO@EXCELEQUINEFEEDS.COM

165 N. CLAY STREET
LOUISVILLE, KY 40202
EXCELEQUINEFEEDS.COM

 Find us on
Facebook EXCEL EQUINE

VISIT YOUR LOCAL EXCEL EQUINE
DEALER BELOW:

Check out our website
with the QR code!



EXCEL
EQUINE®

PRODUCT GUIDE



COMBINING THE ART AND SCIENCE OF
FEEDING HORSES TO PROVIDE TOP
NUTRITIONAL SUPPORT TO
ALL EQUINE LIFESTYLES



EXPERIENCE THE EXCEL EQUINE DIFFERENCE

Excel Equine has become well-known and respected for its extensive line of premium feed blends and supplements, all developed by the company's owners, scientists David Williams, Ph.D., and Kent Thompson, Ph.D.

Both are animal nutrition experts, with doctorates from prestigious agricultural universities and years of research to guide them as they formulate feeds to improve horses' health and performance. They are also horsemen, who know firsthand the issues and challenges horse owners face.

When the company was founded in 2014, Excel Equine made two commitments. Its mill in Louisville, Kentucky, would make feeds only for horses, one of the few feed companies in the U.S. to do so. And, its feeds would be free of antibiotics or other medications, ensuring that horse owners would never have to worry about product safety.



"IT IS VERY IMPORTANT TO HAVE A GOOD HANDLE ON THE SCIENCE OF FEEDING HORSES, BUT YOU ALSO HAVE TO APPRECIATE THE END USER'S NEEDS AND PERCEPTION AND THE REALITY AT THE OWNER'S END. YOU HAVE TO BE ABLE TO BLEND SCIENCE AND ART AS YOU CREATE FEEDS THAT ARE GOOD FOR THE PARTICULAR HORSE AND WHAT THE HORSE LIKES."

Kent Thompson,
managing partner and co-owner

The highly palatable Excel Equine feed blends are nutritious and contain the highest quality ingredients, with a focus on natural proteins, carbohydrates and fats.

Excel Equine's line of supplements use natural minerals, vitamins, fats, proteins and fiber to alleviate common health issues in horses, including digestive troubles, feeding problems, behavioral issues, skin conditions and hoof health.

By taking an approach that blends art and science, Excel Equine has earned a dedicated following of owners and trainers who see their horses flourish as they enthusiastically eat feed that's good and good for them.



TRUST EXCEL EQUINE FEEDS TO BE CONTAMINATE-FREE

What sets us apart for our competition? At Excel Equine, we don't make feeds for all animals; we only make feeds for horses. That allows us to have our Louisville, Kentucky mill that is completely free of antibiotics or medications. Most feed manufacturers make feeds for many species; Excel Equine is one of a handful in the country that is an equine-only facility.

We believe a medication-free manufacturing facility is key to the health and safety of horses, which can be adversely affected when medications used in other animal feeds are introduced into horse feeds by accidental cross contamination during the production process.

In addition, we have strict quality controls in place to evaluate incoming ingredients and our outgoing products.



NEW! EXCEL EQUINE SUPPLEMENTS

Our new supplement line provides optimal nutrition as we combine minerals, vitamins, fats, proteins and fibers to address common health concerns like digestive or feeding problems and skin conditions.

We've also created supplements to correct behavioral issues and to provide a needed calorie boost for horses. Knowing hoof health is critical, we formulated a hoof supplement that thickens hoof walls, promotes growth and prevents cracks.

Our supplements are composed of high quality palatable ingredients which allows them to be easily mixed into the daily feed. As we continue to develop new supplements to address specific health issues, we listen to our customers so that we can develop nutritional supplements to meet their needs. We will continue to develop supplements that will target specific health related conditions.

Call Excel Equine today and get your horses on a path to quality nutrition from a safe and reputable source.

For more information or ordering
details please contact:

EXCEL EQUINE

165 N. CLAY STREET, LOUISVILLE, KY 40202
(800) 295-2836 OR (502) 587-6606
INFO@EXCELEQUINEFEEDS.COM
EXCELEQUINEFEEDS.COM



To find local retailers in your area,
visit ExcelEquineFeeds.com





PERFORMANCE BLENDS

Performance 12®	7
Stability®	8
EPN Classic®	9
Race First®	10
Fiber First®	11
Fortify®	12
Trifiber Compete®	13

PLEASURE BLENDS

Stability 12®	15
Sweet 10®	16
Excel Equine 10®	17
Excel Equine 12®	18
Natur-Alfa Oat Cube®	19
Natur-Oat®	20

SHOW BLENDS

Stability®	22
Fortify®	23
Triplify®	24
Animate®	25
Trifiber Balance®	26

BREEDING BLENDS

Proformance 14®	28
Excel Equine 15®	29
Proformance 16®	30
Quick®	31
EPN Classic®	32
Mare Cube®	33

SPECIAL NEEDS BLENDS

Senior Needs®	35
Carbolyte®	36
Seniority®	37
Senior Plus®	38
Proformance Sales Prep®	39
Enrichment®	40
Fiber First®	41
Senior HF®	42

SUPPLEMENT BLENDS

Hoof Pro®	44
Equilistic®	45
Equigleam®	46
EquiEdge®	47
Level Out®	48
Toplyte®	49



PRODUCT SOLUTIONS INDEX	50-52
-------------------------	-------



PERFORMANCE BLENDS

- Meets caloric needs of highly exercised horses
- Safe calories coming from quality oil sources
- High levels of Omega-3 fatty acids
- High quality fiber sources like beet pulp
- Varying sources of energy to provide a balanced energy profile
- Palatable and designed to provide all nutritional needs when fed with good quality forage



Performance horses can range from the weekend warrior who gets exercised a couple days each week to the heavily exercised racehorse who is exercised daily. Nutritional needs vary dramatically based on the level of activity. Excel Equine products are formulated to meet every nutritional need that performance horses have and contribute immensely to successful performance.



PERFORMANCE 12[®]

LIFESTYLE: TRAINING

Formulated with fat and digestible fiber to support the equine athlete.

This feed has added beet pulp and a higher fat content for mature horses in heavy training or for horses that need to gain weight.

GUARANTEED ANALYSIS

Crude Protein Minimum 12.00%
Lysine Minimum 0.50%
Crude Fat Minimum 8.00%
Crude Fiber Maximum 8.50%
ADF Maximum 10.00%
NDF Maximum 20.50%
Calcium Minimum 0.70%
Calcium Maximum 1.10%
Phosphorus Minimum 0.50%
Copper Minimum 50ppm
Zinc Minimum 150ppm
Selenium Minimum 0.6ppm
Vitamin A Minimum IU/Lb 5,000
Vitamin D3 Minimum IU/Lb 500
Vitamin E Minimum IU/Lb 150

Whole oats, shredded beet pulp, cane molasses, cracked corn, soybean meal, dehydrated alfalfa meal, soybean oil, wheat middlings, maize distillers dried grains, defluorinated phosphate, calcium carbonate, salt, L-lysine, magnesium oxide, zinc amino acid chelate, iron amino acid chelate, ferrous sulfate, manganese sulfate, manganese amino acid chelate, copper sulfate, copper amino acid chelate, ethylenediamine dihydriodide, cobalt sulfate, sodium selenite, selenium yeast, yeast culture, vitamin A supplement, vitamin D3 supplement, vitamin E supplement, menadione sodium bisulfite complex, riboflavin supplement, calcium pantothenate, choline chloride, niacin supplement, vitamin B12 supplement, biotin, folic acid, pyridoxine hydrochloride, thiamine mononitrate, dried lactobacillus acidophilus fermentation product, dried enterococcus faecium fermentation product, dried lactobacillus brevis fermentation product, dried lactobacillus plantarum fermentation product, dried pediococcus acidilacticii fermentation product, yeast culture, natural and artificial feed flavors.



STABILITY®

LIFESTYLE: ALL LIFESTYLES

Versatile in form and function, this feed comes in both pellets and pasture cubes and is suitable for any life stage.

This pelleted feed is highly versatile and suitable for horses that are at different stages in life. Due to its protein and fiber content, **Stability®** is ideal for any equine athlete. This feed stores well in bulk and does not freeze in cold weather.

GUARANTEED ANALYSIS

Crude Protein	Minimum	14.00%
Lysine	Minimum	0.90%
Crude Fat	Minimum	6.00%
Crude Fiber	Maximum	12.00%
ADF	Maximum	19.00%
NDF	Maximum	30.50%
Calcium	Minimum	0.85%
Calcium	Maximum	1.30%
Phosphorus	Minimum	0.60%
Copper	Minimum	50ppm
Zinc	Minimum	175ppm
Selenium	Minimum	0.60ppm
Vitamin A	Minimum IU/Lb	5,000
Vitamin D3	Minimum IU/Lb	600
Vitamin E	Minimum IU/Lb	100

Wheat middlings, dehydrated alfalfa meal, ground corn, ground oats, soybean meal, maize distillers dried grains, soybean hulls, soybean oil, defluorinated phosphate, calcium carbonate, salt, L-lysine, magnesium oxide, zinc amino acid chelate, iron amino acid chelate, ferrous sulfate, manganese sulfate, manganese amino acid chelate, copper sulfate, copper amino acid chelate, ethylenediamine dihydride, cobalt sulfate, sodium selenite, vitamin A supplement, vitamin D3 supplement, vitamin E supplement, menadione sodium bisulfite complex, riboflavin supplement, calcium pantothenate, choline chloride, niacin supplement, vitamin B12 supplement, biotin, folic acid, pyridoxine hydrochloride, thiamine mononitrate, dried lactobacillus acidophilus fermentation product, dried enterococcus faecium fermentation product, dried lactobacillus brevis fermentation product, dried lactobacillus plantarum fermentation product, dried pediococcus acidilacticii fermentation product, yeast culture, natural and artificial feed flavors.



EPN CLASSIC®

LIFESTYLE: ACTIVE TRAINING, BROODMARES, WEANLINGS AND YEARLINGS

With flaked corn and barley, this high-energy nutritious feed will allow broodmares, weanlings, yearlings and high-performance horses to thrive.

This feed's high protein content supplies broodmares, weanlings, yearlings and high-performance horses with the energy and nutrition they need to thrive. Important ingredients are flaked corn, flaked barley and high Vitamin E content.

GUARANTEED ANALYSIS

Crude Protein	Minimum	12.50%
Lysine	Minimum	0.55%
Crude Fat	Minimum	6.00%
Crude Fiber	Maximum	8.50%
ADF	Maximum	8.00%
NDF	Maximum	17.00%
Calcium	Minimum	0.70%
Calcium	Maximum	1.10%
Phosphorus	Minimum	0.50%
Copper	Minimum	60ppm
Zinc	Minimum	170ppm
Selenium	Minimum	0.7ppm
Vitamin A	Minimum IU/Lb	7,000
Vitamin D3	Minimum IU/Lb	600
Vitamin E	Minimum IU/Lb	100

Whole oats, steam rolled barley, cane molasses, cracked corn, soybean meal, wheat middlings, soybean oil, maize distillers dried grains, defluorinated phosphate, dehydrated alfalfa meal, calcium carbonate, salt, L-lysine, magnesium oxide, zinc amino acid chelate, iron amino acid chelate, ferrous sulfate, manganese sulfate, manganese amino acid chelate, copper sulfate, copper amino acid chelate, ethylenediamine dihydride, cobalt sulfate, sodium selenite, selenium yeast, vitamin A supplement, vitamin D3 supplement, vitamin E supplement, menadione sodium bisulfite complex, riboflavin supplement, calcium pantothenate, choline chloride, niacin supplement, vitamin B12 supplement, biotin, folic acid, pyridoxine hydrochloride, thiamine mononitrate, dried lactobacillus acidophilus fermentation product, dried enterococcus faecium fermentation product, dried lactobacillus brevis fermentation product, dried lactobacillus plantarum fermentation product, dried pediococcus acidilacticii fermentation product, yeast culture, natural and artificial feed flavors.



RACE FIRST®

LIFESTYLE: TRAINING

Formulated to support hard working equine athletes with added soy oil for extra energy and beet pulp to support digestive health.

This feed's beet pulp content makes it an ideal choice for equine athletes that need to enhance their racing performance as they avoid digestive problems.

GUARANTEED ANALYSIS

Crude Protein	Minimum	12.00%
Lysine	Minimum	0.60%
Crude Fat	Minimum	8.00%
Crude Fiber	Maximum	10.50%
ADF	Maximum	10.00%
NDF	Maximum	19.00%
Calcium	Minimum	0.70%
Calcium	Maximum	1.10%
Phosphorus	Minimum	0.60%
Copper	Minimum	55ppm
Zinc	Minimum	150ppm
Selenium	Minimum	0.6ppm
Vitamin A	Minimum IU/Lb	5,000
Vitamin D3	Minimum IU/Lb	700
Vitamin E	Minimum IU/Lb	150

Whole oats, shredded beet pulp, cane molasses, cracked corn, soybean meal, dehydrated alfalfa meal, soybean oil, wheat middlings, maize distillers dried grains, defluorinated phosphate, calcium carbonate, salt, L-lysine, magnesium oxide, zinc amino acid chelate, iron amino acid chelate, ferrous sulfate, manganese sulfate, manganese amino acid chelate, copper sulfate, copper amino acid chelate, ethylenediamine dihydride, cobalt sulfate, sodium selenite, vitamin A supplement, vitamin D3 supplement, vitamin E supplement, menadione sodium bisulfite complex, riboflavin supplement, calcium pantothenate, choline chloride, niacin supplement, vitamin B12 supplement, biotin, folic acid, pyridoxine hydrochloride, thiamine mononitrate, dried lactobacillus acidophilus fermentation product, dried enterococcus faecium fermentation product, dried lactobacillus brevis fermentation product, dried lactobacillus plantarum fermentation product, dried pediococcus acidilacticii fermentation product, yeast culture, natural and artificial feed flavors.



FIBER FIRST®

LIFESTYLE: TRAINING

As the name implies, fiber content is high in this feed thanks to increased beet pulp content. Its high fat content makes Fiber First® a safe source of calories and energy. This feed is an ideal choice for horses that struggle with tying up and also for horses with COPD because it also allows them to consume less hay.

GUARANTEED ANALYSIS

Crude Protein	Minimum	12.00%
Lysine	Minimum	0.60%
Crude Fat	Minimum	8.00%
Crude Fiber	Maximum	15.00%
ADF	Maximum	14.50%
NDF	Maximum	26.00%
Calcium	Minimum	1.00%
Calcium	Maximum	1.40%
Phosphorus	Minimum	0.60%
Copper	Minimum	55ppm
Zinc	Minimum	190ppm
Selenium	Minimum	0.60ppm
Vitamin A	Minimum IU/Lb	6,000
Vitamin D3	Minimum IU/Lb	700
Vitamin E	Minimum IU/Lb	100

Shredded beet pulp, soybean hulls, cane molasses, wheat middlings, soybean meal, soybean oil, cracked corn, dehydrated alfalfa meal, maize distillers dried grains, defluorinated phosphate, calcium carbonate, salt, L-lysine, magnesium oxide, zinc amino acid chelate, iron amino acid chelate, ferrous sulfate, manganese sulfate, manganese amino acid chelate, copper sulfate, copper amino acid chelate, ethylenediamine dihydride, cobalt sulfate, sodium selenite, selenium yeast, vitamin A supplement, vitamin D3 supplement, vitamin E supplement, menadione sodium bisulfite complex, riboflavin supplement, calcium pantothenate, choline chloride, niacin supplement, vitamin B12 supplement, biotin, folic acid, pyridoxine hydrochloride, thiamine mononitrate, dried lactobacillus acidophilus fermentation product, dried enterococcus faecium fermentation product, dried lactobacillus brevis fermentation product, dried lactobacillus plantarum fermentation product, dried pediococcus acidilacticii fermentation product, yeast culture, natural and artificial feed flavors.



FORTIFY[®]

LIFESTYLE: ANY EQUINE ATHLETE

This textured feed is highly versatile and suitable for horses that are at different stages in life. With protein level at 13% and fat at 8%, Fortify[®] is ideal for any equine athlete.

This textured feed has added fat content and Vitamin E for horses in training or for horses that need to gain weight.

GUARANTEED ANALYSIS

Crude Protein	Minimum	13.00%
Lysine	Minimum	0.65%
Crude Fat	Minimum	8.00%
Crude Fiber	Maximum	6.50%
ADF	Maximum	7.00%
NDF	Maximum	15.00%
Calcium	Minimum	0.60%
Calcium	Maximum	1.00%
Phosphorus	Minimum	0.50%
Copper	Minimum	55ppm
Zinc	Minimum	175ppm
Selenium	Minimum	0.60ppm
Vitamin A	Minimum IU/LB	5,000
Vitamin D3	Minimum IU/LB	500
Vitamin E	Minimum IU/LB	100

Whole oats, cracked corn, soybean meal, cane molasses, soybean oil, wheat middlings, maize distillers dried grains, dehydrated alfalfa meal, soybean hulls, defluorinated phosphate, calcium carbonate, salt, L-lysine, magnesium oxide, zinc amino acid chelate, iron amino acid chelate, ferrous sulfate, manganese sulfate, manganese amino acid chelate, copper sulfate, copper amino acid chelate, ethylenediamine dihydriodide, cobalt sulfate, sodium selenite, vitamin A supplement, vitamin D3 supplement, vitamin E supplement, menadione sodium bisulfite complex, riboflavin supplement, calcium pantothenate, choline chloride, niacin supplement, vitamin B12 supplement, biotin, folic acid, pyridoxine hydrochloride, thiamine mononitrate, dried lactobacillus acidophilus fermentation product, dried enterococcus faecium fermentation product, dried lactobacillus brevis fermentation product, dried lactobacillus plantarum fermentation product, dried pediococcus acidilacticii fermentation product, yeast culture, natural and artificial flavors.



TRIFIBER COMPETE[®]

LIFESTYLE: ANY EQUINE ATHLETE

Trifiber Compete[®] is a low-starch highly digestible performance feed that is designed for horses competing in athletic competitions. It is composed of safe, digestible fiber sources like beet pulp and high-quality fat sources like rice bran. Trifiber Compete[®] works very well for all competing horses or those that need a source of safe calories while trying to gain weight. The low starch and NSC content make it an ideal choice for horses that may be prone to any metabolic health condition.

GUARANTEED ANALYSIS

Crude Protein	Minimum	12.0%
Lysine	Minimum	0.8%
Crude Fat	Minimum	12.0%
Crude Fiber	Maximum	18.0%
ADF	Maximum	16.50%
NDF	Maximum	29.50%
Calcium	Minimum	0.8%
Calcium	Maximum	1.2%
Phosphorus	Minimum	0.6%
Copper	Minimum	60ppm
Zinc	Minimum	150ppm
Selenium	Minimum	0.4ppm
Vitamin A	Minimum IU/LB	10,000
Vitamin D3	Minimum IU/LB	1,000
Vitamin E	Minimum IU/LB	130

Soybean hulls, shredded beet pulp, wheat middlings, vegetable oil, cane molasses, dehydrated alfalfa meal, soybean meal, chopped timothy, flaked barley, rice bran, maize distillers dried grains, defluorinated phosphate, calcium carbonate, salt, L-lysine, magnesium oxide, zinc amino acid chelate, iron amino acid chelate, ferrous sulfate, manganese sulfate, manganese amino acid chelate, copper sulfate, copper amino acid chelate, ethylenediamine dihydriodide, cobalt sulfate, sodium selenite, vitamin A supplement, vitamin D3 supplement, vitamin E supplement, menadione sodium bisulfite complex, riboflavin supplement, calcium pantothenate, choline chloride, niacin supplement, vitamin B12 supplement, biotin, folic acid, pyridoxine hydrochloride, thiamine mononitrate, dried lactobacillus acidophilus fermentation product, dried enterococcus faecium fermentation product, dried lactobacillus brevis fermentation product, dried lactobacillus plantarum fermentation product, dried pediococcus acidilacticii fermentation product, yeast culture, natural and artificial feed flavors.



PLEASURE BLENDS

- Designed for the lightly exercised horse
- Ideal for pleasure, trail or pasture horses
- Lower nutritional levels for horses with lower nutritional needs
- Safe to feed
- Palatable
- Economical



Pleasure horses generally have a relatively minimal need for specialized nutritional support. It is critical, however, that these horses receive a nutritionally fortified diet that is lower in calories yet still balanced for vitamin, mineral, and protein content.



STABILITY 12[®]

LIFESTYLE: MODERATE ACTIVITY

Economically priced pelleted feed for working horses.

GUARANTEED ANALYSIS

Crude Protein Minimum 12.00%
Lysine Minimum 0.60%
Crude Fat Minimum 6.00%
Crude Fiber Maximum 13.00%
ADF Maximum 19.00%
NDF Maximum 29.50%
Calcium Minimum 0.85%
Calcium Maximum 1.20%
Phosphorus Minimum 0.60%
Copper Minimum 50ppm
Zinc Minimum 175ppm
Selenium Minimum 0.50ppm
Vitamin A Minimum IU/Lb 5,000
Vitamin D3 Minimum IU/Lb 600
Vitamin E Minimum IU/Lb 50

Wheat middlings, dehydrated alfalfa meal, ground corn, ground oats, maize distillers dried grains, soybean meal, soybean hulls, soybean oil, dried molasses, de-fluorinated phosphate, calcium carbonate, salt, L-lysine, magnesium oxide, zinc amino acid chelate, iron amino acid chelate, ferrous sulfate, manganese sulfate, manganese amino acid chelate, copper sulfate, copper amino acid chelate, ethylenediamine dihydriodide, cobalt sulfate, sodium selenite, vitamin A supplement, vitamin D3 supplement, vitamin E supplement, menadione sodium bisulfite complex, riboflavin supplement, calcium pantothenate, choline chloride, niacin supplement, vitamin B12 supplement, biotin, folic acid, pyridoxine hydrochloride, thiamine mononitrate, dried lactobacillus acidophilus fermentation product, dried enterococcus faecium fermentation product, dried lactobacillus brevis fermentation product, dried lactobacillus plantarum fermentation product, dried pediococcus acidilacticii fermentation product, yeast culture, natural and artificial feed flavors



SWEET 10®

LIFESTYLE: LOW ACTIVITY

Our economic textured feed, Sweet 10® has less fat and fewer vitamins and minerals. It is an ideal choice for horses that are not in extreme competition settings.

GUARANTEED ANALYSIS

Crude Protein	Minimum	10.00%
Lysine	Minimum	0.40%
Crude Fat	Minimum	4.00%
Crude Fiber	Maximum	12.50%
ADF	Maximum	14.00%
NDF	Maximum	26.00%
Calcium	Minimum	0.60%
Calcium	Maximum	1.10%
Phosphorus	Minimum	0.50%
Copper	Minimum	25ppm
Zinc	Minimum	75ppm
Selenium	Minimum	0.4ppm
Vitamin A	Minimum IU/Lb	3,000
Vitamin D3	Minimum IU/Lb	300
Vitamin E	Minimum IU/Lb	25

Cracked corn, wheat middlings, soybean hulls, whole oats, cane molasses, dehydrated alfalfa meal, dried maize distillers grains, soybean oil, defluorinated phosphate, calcium carbonate, salt, L-lysine, magnesium oxide, zinc amino acid chelate, iron amino acid chelate, ferrous sulfate, manganese sulfate, manganese amino acid chelate, copper sulfate, copper amino acid chelate, ethylenediamine dihydriodide, cobalt sulfate, sodium selenite, vitamin A supplement, vitamin D3 supplement, vitamin E supplement, menadione sodium bisulfite complex, riboflavin supplement, calcium pantothenate, choline chloride, niacin supplement, vitamin B12 supplement, biotin, folic acid, pyridoxine hydrochloride, thiamine mononitrate, dried lactobacillus acidophilus fermentation product, dried enterococcus faecium fermentation product, dried lactobacillus brevis fermentation product, dried lactobacillus plantarum fermentation product, dried pediococcus acidilacticii fermentation product, yeast culture, natural and artificial feed flavors.



EXCEL EQUINE 10®

LIFESTYLE: MATURE, INACTIVE

Ideal to be fed with good quality hay or pasture.

When quality hay and pasture are available and nutrition needs are for maintenance, this textured feed is ideal for pleasure horses that are mature or inactive.

GUARANTEED ANALYSIS

Crude Protein	Minimum	10.00%
Lysine	Minimum	0.40%
Crude Fat	Minimum	5.00%
Crude Fiber	Maximum	6.50%
ADF	Maximum	10.00%
NDF	Maximum	13.50%
Calcium	Minimum	0.60%
Calcium	Maximum	1.00%
Phosphorus	Minimum	0.50%
Copper	Minimum	35ppm
Zinc	Minimum	100ppm
Selenium	Minimum	0.4ppm
Vitamin A	Minimum IU/Lb	3,000
Vitamin D3	Minimum IU/Lb	500
Vitamin E	Minimum IU/Lb	25

Cracked corn, whole oats, cane molasses, soybean meal, wheat middlings, maize distillers dried grains, defluorinated phosphate, dehydrated alfalfa meal, soybean oil, calcium carbonate, salt, L-lysine, magnesium oxide, zinc amino acid chelate, iron amino acid chelate, ferrous sulfate, manganese sulfate, manganese amino acid chelate, copper sulfate, copper amino acid chelate, ethylenediamine dihydriodide, cobalt sulfate, sodium selenite, vitamin A supplement, vitamin D3 supplement, vitamin E supplement, menadione sodium bisulfite complex, riboflavin supplement, calcium pantothenate, choline chloride, niacin supplement, vitamin B12 supplement, biotin, folic acid, pyridoxine hydrochloride, thiamine mononitrate, dried lactobacillus acidophilus fermentation product, dried enterococcus faecium fermentation product, dried lactobacillus brevis fermentation product, dried lactobacillus plantarum fermentation product, dried pediococcus acidilacticii fermentation product, yeast culture, natural and artificial feed flavor.



EXCEL EQUINE 12®

LIFESTYLE: MODERATE ACTIVITY

Five percent fat content will support moderate training while maintaining good condition.

This textured feed, is suitable for mature horses in moderate training.

GUARANTEED ANALYSIS

Crude Protein	Minimum	12.00%
Lysine	Minimum	0.50%
Crude Fat	Minimum	5.00%
Crude Fiber	Maximum	6.50%
ADF	Maximum	10.00%
NDF	Maximum	20.00%
Calcium	Minimum	0.60%
Calcium	Maximum	1.00%
Phosphorus	Minimum	0.50%
Copper	Minimum	50ppm
Zinc	Minimum	150ppm
Selenium	Minimum	0.5ppm
Vitamin A	Minimum IU/Lb	5,000
Vitamin D3	Minimum IU/Lb	500
Vitamin E	Minimum IU/Lb	50

Whole oats, cracked corn, cane molasses, soybean meal, wheat middlings, maize distillers dried grains, dehydrated alfalfa meal, soybean oil, defluorinated phosphate, calcium carbonate, salt, L-lysine, magnesium oxide, zinc amino acid chelate, iron amino acid chelate, ferrous sulfate, manganese sulfate, manganese amino acid chelate, copper sulfate, copper amino acid chelate, ethylenediamine dihydride, cobalt sulfate, sodium selenite, vitamin A supplement, vitamin D3 supplement, vitamin E supplement, menadione sodium bisulfite complex, riboflavin supplement, calcium pantothenate, choline chloride, niacin supplement, vitamin B12 supplement, biotin, folic acid, pyridoxine hydrochloride, thiamine mononitrate, dried lactobacillus acidophilus fermentation product, dried enterococcus faecium fermentation product, dried lactobacillus brevis fermentation product, dried lactobacillus plantarum fermentation product, dried pediococcus acidilactici fermentation product, yeast culture, natural and artificial feed flavor.



NATUR-ALFA OAT CUBE®

LIFESTYLE: ALL LIFESTYLES

This oat and alfalfa-based feed is composed of heavy oats and high quality alfalfa to give the horse an alternative to a traditional oat and alfalfa diet. It is suitable for a wide range of horse lifestyles, and, is composed of safe and digestible ingredients. Thirty five percent of the fiber in this feed is from alfalfa and forty percent of the digestible protein is from oats.

GUARANTEED ANALYSIS

Crude Protein	Minimum	13.00%
Lysine	Minimum	0.90%
Crude Fat	Minimum	5.00%
Crude Fiber	Maximum	17.0%
ADF	Maximum	20.0%
NDF	Maximum	38.0%
Calcium	Minimum	1.0%
Calcium	Maximum	1.4%
Phosphorus	Minimum	0.6%
Copper	Minimum	50PPM
Zinc	Minimum	170PPM
Selenium	Minimum	0.6PPM
Vitamin A	Minimum	6,000 IU/LB
Vitamin D3	Minimum	600 IU/LB
Vitamin E	Minimum	100 IU/LB

Ground oats, dehydrated alfalfa meal, wheat middlings, maize distillers dried grains, soybean hulls, ground corn, soybean oil, defluorinated phosphate, calcium carbonate, L-lysine, dried molasses, salt, dl-methionine, magnesium oxide, zinc amino acid chelate, iron amino acid chelate, ferrous sulfate, manganese sulfate, manganese amino acid chelate, copper sulfate, copper amino acid chelate, ethylenediamine dihydride, cobalt sulfate, sodium selenite, d-alpha tocopherol acetate(vitamin E), vitamin A supplement, vitamin D3 supplement, vitamin E supplement, menadione sodium bisulfite complex, riboflavin supplement, calcium pantothenate, choline chloride, niacin supplement, vitamin B12 supplement, biotin, folic acid, pyridoxine hydrochloride, thiamine mononitrate, dried lactobacillus acidophilus fermentation product, dried enterococcus faecium fermentation product, dried lactobacillus brevis fermentation product, dried lactobacillus plantarum fermentation product, dried pediococcus acidilactici fermentation product, yeast culture.



NATUR-OAT®

LIFESTYLE: ALL LIFESTYLES

Natur-Oat® is a feed composed of ground oats to enhance palatability in a natural way. This feed is ideal for farms that have a wide variety of horses at different ages and lifestyles. It is composed of safe and digestible ingredients and fortified with high levels of vitamins and minerals.

GUARANTEED ANALYSIS

Crude Protein Minimum 14.0%
Lysine Minimum 0.90%
Crude Fat Minimum 6.0%
Crude Fiber Maximum 14.0%
ADF Maximum 17.0%
NDF Maximum 28.0%
Calcium Minimum 1.0%
Calcium Maximum 1.4%
Phosphorus Minimum 0.6%
Copper Minimum 60PPM
Zinc Minimum 175PPM
Selenium Minimum 0.6PPM
Vitamin A Minimum IU/Lb 6,000
Vitamin D3 Minimum IU/Lb 700
Vitamin E Minimum IU/Lb 130

Ground oats, wheat middlings, dehydrated alfalfa meal, soybean hulls, soybean meal, distillers dried grains, ground corn, soybean oil, defluorinated phosphate, calcium carbonate, L-lysine, dried molasses, salt, dl-methionine, magnesium oxide, zinc amino acid chelate, iron amino acid chelate, ferrous sulfate, manganese sulfate, manganese amino acid chelate, copper sulfate, copper amino acid chelate, ethylenediamine dihydriodide, cobalt sulfate, sodium selenite, d-alpha tocopherol acetate(vitamin E), vitamin A supplement, vitamin D3 supplement, vitamin E supplement, menadione sodium bisulfite complex, riboflavin supplement, calcium pantothenate, choline chloride, niacin supplement, vitamin B12 supplement, biotin, folic acid, pyridoxine hydrochloride, thiamine mononitrate, lactobacillus acidophilus, enterococcus faecium, lactobacillus brevis, lactobacillus plantarum, pediococcus acidilactici, yeast culture, natural feed flavors.



SHOW BLENDS

- For horses that have a moderate level of exercise
- Fortified with higher fat for energy metabolism
- Contains vitamin levels appropriate for moderate exercise
- Varying feed forms to meet individual customer needs
- High palatability
- Optimal mineral content for show horses
- Fat content helps behavior
- Quality proteins help with muscle function
- Vitamin content to help with muscle recovery
- Excellent quality fiber to moderate energy metabolism and moderate behavior
- High quality grains and ingredients which lead horses to the feed tub



Show horses have nutritional needs that are unique to their specific show discipline, ranging from high-calorie and highly nutritionally fortified feeds to feeds that are designed to be used in small amounts and that reflect the lower energy expenditure of some show horses. Excel Equine products are developed to meet these varied nutritional needs.



STABILITY[®]

LIFESTYLE: ALL LIFESTYLES

Versatile in form and function, this feed comes in both pellets and pasture cubes and is suitable for any life stage.

This pelleted feed is highly versatile and suitable for horses that are at different stages in life. Due to its protein and fiber content, **Stability[®]** is ideal for any equine athlete. This feed stores well in bulk and does not freeze in cold weather.

GUARANTEED ANALYSIS

Crude Protein	Minimum	14.00%
Lysine	Minimum	0.90%
Crude Fat	Minimum	6.00%
Crude Fiber	Maximum	12.00%
ADF	Maximum	19.00%
NDF	Maximum	30.50%
Calcium	Minimum	0.85%
Calcium	Maximum	1.30%
Phosphorus	Minimum	0.60%
Copper	Minimum	50ppm
Zinc	Minimum	175ppm
Selenium	Minimum	0.60ppm
Vitamin A	Minimum IU/Lb	5,000
Vitamin D3	Minimum IU/Lb	600
Vitamin E	Minimum IU/Lb	100

Wheat middlings, dehydrated alfalfa meal, ground corn, ground oats, soybean meal, maize distillers dried grains, soybean hulls, soybean oil, defluorinated phosphate, calcium carbonate, salt, L-lysine, magnesium oxide, zinc amino acid chelate, iron amino acid chelate, ferrous sulfate, manganese sulfate, manganese amino acid chelate, copper sulfate, copper amino acid chelate, ethylenediamine dihydride, cobalt sulfate, sodium selenite, vitamin A supplement, vitamin D3 supplement, vitamin E supplement, menadione sodium bisulfite complex, riboflavin supplement, calcium pantothenate, choline chloride, niacin supplement, vitamin B12 supplement, biotin, folic acid, pyridoxine hydrochloride, thiamine mononitrate, dried lactobacillus acidophilus fermentation product, dried enterococcus faecium fermentation product, dried lactobacillus brevis fermentation product, dried lactobacillus plantarum fermentation product, dried pediococcus acidilacticii fermentation product, yeast culture, natural and artificial feed flavors.



FORTIFY[®]

LIFESTYLE: ANY EQUINE ATHLETE

This textured feed is highly versatile and suitable for horses that are at different stages in life. With protein level at 13% and fat at 8%, **Fortify[®]** is ideal for any equine athlete.

This textured feed has added fat content and Vitamin E for horses in training or for horses that need to gain weight.

GUARANTEED ANALYSIS

Crude Protein	Minimum	13.00%
Lysine	Minimum	0.65%
Crude Fat	Minimum	8.00%
Crude Fiber	Maximum	6.50%
ADF	Maximum	7.00%
NDF	Maximum	15.00%
Calcium	Minimum	0.60%
Calcium	Maximum	1.00%
Phosphorus	Minimum	0.50%
Copper	Minimum	55ppm
Zinc	Minimum	175ppm
Selenium	Minimum	0.60ppm
Vitamin A	Minimum IU/LB	5,000
Vitamin D3	Minimum IU/LB	500
Vitamin E	Minimum IU/LB	100

Whole oats, cracked corn, soybean meal, cane molasses, soybean oil, wheat middlings, maize distillers dried grains, dehydrated alfalfa meal, soybean hulls, defluorinated phosphate, calcium carbonate, salt, L-lysine, magnesium oxide, zinc amino acid chelate, iron amino acid chelate, ferrous sulfate, manganese sulfate, manganese amino acid chelate, copper sulfate, copper amino acid chelate, ethylenediamine dihydride, cobalt sulfate, sodium selenite, vitamin A supplement, vitamin D3 supplement, vitamin E supplement, menadione sodium bisulfite complex, riboflavin supplement, calcium pantothenate, choline chloride, niacin supplement, vitamin B12 supplement, biotin, folic acid, pyridoxine hydrochloride, thiamine mononitrate, dried lactobacillus acidophilus fermentation product, dried enterococcus faecium fermentation product, dried lactobacillus brevis fermentation product, dried lactobacillus plantarum fermentation product, dried pediococcus acidilacticii fermentation product, yeast culture, natural and artificial flavors.



TRIPLIFY®

LIFESTYLE: MATURE EQUINE ATHLETE

Triplify® is highly versatile and suitable for horses that are at different stages in life. Due to its low protein and high fat content, Triplify® is ideal for any equine athlete. This textured feed's high fat and fiber content makes it an excellent choice for horses that need to gain weight. Beet pulp provides high quality fiber content. The protein content makes it a good choice for horses that are in all levels of training.

GUARANTEED ANALYSIS

Crude Protein	Minimum	10.00%
Lysine	Minimum	0.50%
Crude Fat	Minimum	10.00%
Crude Fiber	Maximum	10.00%
ADF	Maximum	7.00%
NDF	Maximum	14.50%
Calcium	Minimum	0.60%
Calcium	Maximum	1.10%
Phosphorus	Minimum	0.50%
Copper	Minimum	50ppm
Zinc	Minimum	150ppm
Selenium	Minimum	0.6ppm
Vitamin A	Minimum IU/Lb	5,000
Vitamin D3	Minimum IU/Lb	500
Vitamin E	Minimum IU/Lb	100

Whole oats, cracked corn, cane molasses, soybean oil, shredded beet pulp, soybean meal, wheat middlings, maize distillers dried grains, dehydrated alfalfa meal, defluorinated phosphate, calcium carbonate, salt, L-lysine, magnesium oxide, zinc amino acid chelate, iron amino acid chelate, ferrous sulfate, manganese sulfate, manganese amino acid chelate, copper sulfate, copper amino acid chelate, ethylenediamine dihydriodide, cobalt sulfate, sodium selenite, selenium yeast, vitamin A supplement, vitamin D3 supplement, vitamin E supplement, menadione sodium bisulfite complex, riboflavin supplement, calcium pantothenate, choline chloride, niacin supplement, vitamin B12 supplement, biotin, folic acid, pyridoxine hydrochloride, thiamine mononitrate, dried lactobacillus acidophilus fermentation product, dried enterococcus faecium fermentation product, dried lactobacillus brevis fermentation product, dried lactobacillus plantarum fermentation product, dried pediococcus acidilacticii fermentation product, yeast culture, natural and artificial flavors.



ANIMATE®

LIFESTYLE: HEAVY TRAINING OR HARD KEEPERS

Animate® is highly versatile and suitable for horses that are at different stages in life. With 12% protein and 10% fat, is an ideal pelleted feed to add weight or keep weight on a hard keeper.

This pelleted feed's high fat and fiber content makes it an ideal choice for the horse in heavy training or a hard keeper. A low-starch feed, Animate® is a great option for those who need more energy from a safe source.

GUARANTEED ANALYSIS

Crude Protein	Minimum	12.00%
Lysine	Minimum	0.50%
Crude Fat	Minimum	10.00%
Crude Fiber	Maximum	16.00%
ADF	Maximum	20.50%
NDF	Maximum	36.50%
Calcium	Minimum	0.90%
Calcium	Maximum	1.25%
Phosphorus	Minimum	0.65%
Copper	Minimum	50ppm
Zinc	Minimum	150ppm
Selenium	Minimum	0.60ppm
Vitamin A	Minimum IU/Lb	4,500
Vitamin D3	Minimum IU/Lb	500
Vitamin E	Minimum IU/Lb	150

Soybean hulls, wheat middlings, dehydrated alfalfa meal, soybean oil, soybean meal, cane molasses, maize distillers dried grains, defluorinated phosphate, calcium carbonate, salt, L-lysine, magnesium oxide, zinc amino acid chelate, iron amino acid chelate, ferrous sulfate, manganese sulfate, manganese amino acid chelate, copper sulfate, copper amino acid chelate, ethylenediamine dihydriodide, cobalt sulfate, sodium selenite, vitamin A supplement, vitamin D3 supplement, vitamin E supplement, menadione sodium bisulfite complex, riboflavin supplement, calcium pantothenate, choline chloride, niacin supplement, vitamin B12 supplement, biotin, folic acid, pyridoxine hydrochloride, thiamine mononitrate, dried lactobacillus acidophilus fermentation product, dried enterococcus faecium fermentation product, dried lactobacillus brevis fermentation product, dried lactobacillus plantarum fermentation product, dried pediococcus acidilacticii fermentation product, yeast culture, natural and artificial flavors.



TRIFIBER BALANCE®

LIFESTYLE: MATURE & TRAINING

This textured feed is a highly digestible show horse feed designed for horses at maintenance/moderate work or for horses who need to gain weight. With less sugars and more fiber (whole grains, chopped hay, dehydrated carrots), it is a healthier, more natural feed for your horse. Formulated to entice picky eaters, dehydrated carrots act as a natural palatability enhancer while providing added vitamins and nutrients to your horse's diet.

GUARANTEED ANALYSIS

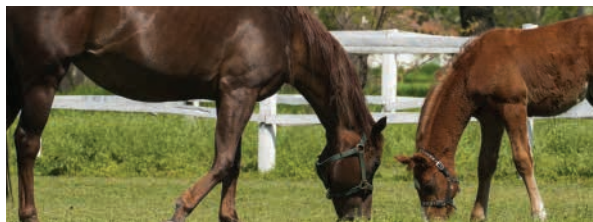
Crude Protein	Minimum	11.00%
Lysine	Minimum	0.60%
Crude Fat	Minimum	8.00%
Crude Fiber	Maximum.....	15.00%
ADF	Maximum.....	15.50%
NDF	Maximum.....	27.50%
Calcium	Minimum	0.80%
Calcium	Maximum.....	1.20%
Phosphorus	Minimum	0.60%
Copper.....	Minimum	50 ppm
Zinc	Minimum	140 ppm
Selenium	Minimum	0.5 ppm
Vitamin A.....	Minimum IU/Lb.....	9,000
Vitamin D3	Minimum IU/Lb.....	1000
Vitamin E	Minimum IU/Lb.....	130

Soybean hulls, shredded beet pulp, wheat middlings, cane molasses, steam rolled barley, whole oats, steam crimped oats, dehydrated alfalfa meal, soybean meal, vegetable oil, dehydrated carrot, chopped timothy, steam rolled corn, rice bran, maize distillers dried grains, defluorinated phosphate, calcium carbonate, salt, L-lysine, magnesium oxide, zinc amino acid chelate, iron amino acid chelate, ferrous sulfate, manganese sulfate, manganese amino acid chelate, copper sulfate, copper amino acid chelate, ethylenediamine dihydriodide, cobalt sulfate, sodium selenite, vitamin A supplement, vitamin D3 supplement, vitamin E supplement, menadione sodium bisulfite complex, riboflavin supplement, calcium pantothenate, choline chloride, niacin supplement, vitamin B12 supplement, biotin, folic acid, pyridoxine hydrochloride, thiamine mononitrate, lactobacillus acidophilus, enterococcus faecium, lactobacillus brevis, lactobacillus plantarum, pediococcus acidilactici, yeast culture, natural and artificial feed flavors.



BREEDING BLENDS

- Fortified with higher nutrient levels for pregnant and lactating mares
- Fortified with higher nutrition for growing horses
- Added fat for skin and hair condition
- Quality protein used for optimal muscle and skeletal development
- Added mineral levels for growth and development
- Organic mineral sources for enhanced mineral utilization
- Higher vitamin levels for breeding animals



Breeding horses have added nutritional needs, ranging from the nutritional demands of young growing horses and lactating mares to the more moderate nutritional needs of stallions and pregnant mares. Nutrition provided during these times is especially important as young horses and pregnant mares are developing the muscle/bone foundation for the future. Excel Equine products are designed to meet these additional needs in a well-fortified and palatable line of feeds.



PROFORMANCE 14[®]

LIFESTYLE: BROODMARES, GROWING WEANLINGS AND YEARLINGS

Highly fortified textured feed ideal for late pregnancy, post weaning and developing yearlings.

This feed is suitable for broodmares, foals, weanlings, yearlings, and performance horses. Composed of flaked barley and flaked corn, it has a higher level of Vitamin E.

GUARANTEED ANALYSIS

Crude Protein	Minimum	14.00%
Lysine	Minimum	0.70%
Crude Fat	Minimum	6.00%
Crude Fiber	Maximum	8.00%
ADF	Maximum	8.00%
NDF	Maximum	17.50%
Calcium	Minimum	0.85%
Calcium	Maximum	1.30%
Phosphorus	Minimum	0.55%
Copper	Minimum	60ppm
Zinc	Minimum	175ppm
Selenium	Minimum	0.6ppm
Vitamin A	Minimum IU/Lb	6,000
Vitamin D3	Minimum IU/Lb	600
Vitamin E	Minimum IU/Lb	100

Whole oats, soybean meal, cane molasses, cracked corn, wheat middlings, steam rolled barley, steam rolled corn, soybean oil, maize distillers dried grains, dehydrated alfalfa meal, defluorinated phosphate, calcium carbonate, salt, monocalcium phosphate, dicalcium phosphate, zinc sulfate, zinc proteinate, ferrous sulfate, iron proteinate, manganese sulfate, manganese proteinate, copper sulfate, copper proteinate, ethylenediamine dihydride, cobalt sulfate, menadione sodium bisulfite complex (source of vitamin K), choline chloride, d-calcium pantothenate, selenium yeast, yeast culture, vitamin A supplement, vitamin D3 supplement, vitamin E supplement, vitamin B12 supplement, riboflavin supplement, biotin supplement, pyridoxine hydrochloride, L-lysine, niacin supplement, folic acid, thiamine mononitrate, dried lactobacillus acidophilus fermentation product, dried enterococcus faecium fermentation product, dried lactobacillus brevis fermentation product, dried lactobacillus plantarum fermentation product, dried pediococcus acidilacticii fermentation product, yeast culture, natural and artificial feed flavors.



EXCEL EQUINE 15[®]

LIFESTYLE: BROODMARES, GROWING WEANLINGS AND YEARLINGS

Economical high protein feed for broodmares in late pregnancy and growing horses.

This textured feed is formulated for broodmares, foals, weanlings, yearlings, and high-performance horses in vigorous training.

GUARANTEED ANALYSIS

Crude Protein	Minimum	15.00%
Lysine	Minimum	0.70%
Crude Fat	Minimum	5.00%
Crude Fiber	Maximum	6.50%
ADF	Maximum	6.50%
NDF	Maximum	14.50%
Calcium	Minimum	0.80%
Calcium	Maximum	1.10%
Phosphorus	Minimum	0.50%
Copper	Minimum	50ppm
Zinc	Minimum	160ppm
Selenium	Minimum	0.6ppm
Vitamin A	Minimum IU/Lb	5,000
Vitamin D3	Minimum IU/Lb	600
Vitamin E	Minimum IU/Lb	50

Whole oats, cracked corn, soybean meal, cane molasses, wheat middlings, maize distillers dried grains, dehydrated alfalfa meal, soybean oil, defluorinated phosphate, calcium carbonate, salt, potassium chloride, potassium sulfate, magnesium oxide, magnesium sulfate, zinc sulfate, ferrous sulfate, manganese sulfate, copper sulfate, ethylenediamine dihydride, cobalt sulfate, vitamin A supplement, vitamin D3 supplement, vitamin E supplement, menadione sodium bisulfite complex, choline chloride, riboflavin, calcium pantothenate, niacin, biotin, folic acid, thiamine mononitrate, pyridoxine hydrochloride, sodium selenite, zinc proteinate, manganese proteinate, copper proteinate, yeast culture, dried lactobacillus acidophilus fermentation product, dried enterococcus faecium fermentation product, dried lactobacillus brevis fermentation product, dried lactobacillus plantarum fermentation product, dried pediococcus acidilacticii fermentation product, yeast culture, natural and artificial feed flavors.



PROFORMANCE 16®

LIFESTYLE: LACTATING MARES

Formulated with extra protein to support milk production in lactating mares. Ideal as foal creep and post weaning foal feed.

This feed is suitable for lactating mares that need a high amount of protein. It contains flaked corn, flaked barley and has a higher level of Vitamin E.

GUARANTEED ANALYSIS

Crude Protein	Minimum	16.00%
Lysine	Minimum	0.80%
Crude Fat	Minimum	6.00%
Crude Fiber	Maximum	8.50%
ADF	Maximum	7.50%
NDF	Maximum	17.00%
Calcium	Minimum	0.90%
Calcium	Maximum	1.20%
Phosphorus	Minimum	0.65%
Copper	Minimum	70ppm
Zinc	Minimum	200ppm
Selenium	Minimum	0.6ppm
Vitamin A	Minimum IU/Lb	7,500
Vitamin D3	Minimum IU/Lb	800
Vitamin E	Minimum IU/Lb	125

Whole oats, steam rolled barley, cracked corn, soybean meal, steam rolled corn, cane molasses, wheat middlings, soybean oil, dehydrated alfalfa meal, maize distillers dried grains, defluorinated phosphate, calcium carbonate, salt, monocalcium phosphate, dicalcium phosphate, zinc sulfate, zinc proteinate, ferrous sulfate, iron proteinate, manganese sulfate, manganese proteinate, copper sulfate, copper proteinate, ethylenediamine dihydriodide, cobalt sulfate, menadione sodium bisulfite complex (source of vitamin k), choline chloride, d-calcium pantothenate, selenium yeast, vitamin A supplement, vitamin D3 supplement, vitamin E supplement, vitamin B12 supplement, riboflavin supplement, biotin supplement, pyridoxine hydrochloride, L-lysine, niacin supplement, folic acid, thiamine mononitrate, dried lactobacillus acidophilus fermentation product, dried enterococcus faecium fermentation product, dried lactobacillus brevis fermentation product, dried lactobacillus plantarum fermentation product, dried pediococcus acidilacticii fermentation product, yeast culture, natural and artificial feed flavors.



QUICK®

LIFESTYLE: FOALS UP TO 5 MONTHS OF AGE

Highly digestible, with milk-based ingredients that provide optimal nutrition for creep feeding foals. This feed is designed for foals up to five months of age.

GUARANTEED ANALYSIS

Crude Protein	Minimum	18.00%
Lysine	Minimum	1.00%
Crude Fat	Minimum	3.00%
Crude Fiber	Maximum	9.00%
ADF	Maximum	9.50%
NDF	Maximum	22.00%
Calcium	Minimum	0.90%
Calcium	Maximum	1.20%
Phosphorus	Minimum	0.65%
Copper	Minimum	55ppm
Zinc	Minimum	150ppm
Selenium	Minimum	0.50ppm
Vitamin A	Minimum IU/Lb	7,000
Vitamin D3	Minimum IU/Lb	800
Vitamin E	Minimum IU/Lb	30

Wheat middlings, soybean meal, dehydrated alfalfa meal, ground corn, dried whey, ground oats, calcium carbonate, dicalcium phosphate, salt, zinc sulfate, zinc proteinate, ferrous sulfate, iron proteinate, manganese sulfate, manganese proteinate, copper sulfate, copper proteinate, ethylenediamine dihydriodide, cobalt sulfate, menadione sodium bisulfite complex (source of vitamin k), choline chloride, calcium d-pantothenate, selenium yeast, vitamin A supplement, vitamin D3 supplement, vitamin E supplement, vitamin B12 supplement, riboflavin supplement, biotin supplement, pyridoxine hydrochloride, niacin supplement, folic acid, thiamine mononitrate, yeast culture, natural and artificial feed flavors.



EPN CLASSIC®

LIFESTYLE: ACTIVE TRAINING, BROODMARES, WEANLINGS AND YEARLINGS

With flaked corn and barley, this high-energy nutritious feed will allow broodmares, weanlings, yearlings and high-performance horses to thrive.

This feed's high protein content supplies broodmares, weanlings, yearlings and high-performance horses with the energy and nutrition they need to thrive. Important ingredients are flaked corn, flaked barley and high Vitamin E content.

GUARANTEED ANALYSIS

Crude Protein	Minimum	12.50%
Lysine	Minimum	0.55%
Crude Fat	Minimum	6.00%
Crude Fiber	Maximum	8.50%
ADF	Maximum	8.00%
NDF	Maximum	17.00%
Calcium	Minimum	0.70%
Calcium	Maximum	1.10%
Phosphorus	Minimum	0.50%
Copper.....	Minimum	60ppm
Zinc	Minimum	170ppm
Selenium	Minimum	0.7ppm
Vitamin A.....	Minimum IU/Lb	7,000
Vitamin D3	Minimum IU/Lb	600
Vitamin E	Minimum IU/Lb	100

Whole oats, steam rolled barley, cane molasses, cracked corn, soybean meal, wheat middlings, soybean oil, maize distillers dried grains, defluorinated phosphate, dehydrated alfalfa meal, calcium carbonate, salt, L-lysine, magnesium oxide, zinc amino acid chelate, iron amino acid chelate, ferrous sulfate, manganese sulfate, manganese amino acid chelate, copper sulfate, copper amino acid chelate, ethylenediamine dihydriodide, cobalt sulfate, sodium selenite, selenium yeast, vitamin A supplement, vitamin D3 supplement, vitamin E supplement, menadione sodium bisulfite complex, riboflavin supplement, calcium pantothenate, choline chloride, niacin supplement, vitamin B12 supplement, biotin, folic acid, pyridoxine hydrochloride, thiamine mononitrate, dried lactobacillus acidophilus fermentation product, dried enterococcus faecium fermentation product, dried lactobacillus brevis fermentation product, dried lactobacillus plantarum fermentation product, dried pediococcus acidilacticii fermentation product, yeast culture, natural and artificial feed flavors.



MARE CUBE®

LIFESTYLE: ALL LIFESTYLES

Mare Cube®, a palatable cube that offers high fortification levels of protein, amino acids, vitamins and minerals. This feed is suitable for broodmares and growing horses. It is composed of high-quality ingredients and provides optimal levels of nutrition for all horses.

GUARANTEED ANALYSIS

Crude Protein	Minimum	14.0%
Lysine	Minimum	0.90%
Crude Fat	Minimum	6.0%
Crude Fiber	Maximum	15.0%
ADF	Maximum	17.0%
NDF	Maximum	34.0%
Calcium	Minimum	1.0%
Calcium	Maximum	1.3%
Phosphorus	Minimum	0.7%
Copper.....	Minimum	40PPM
Zinc	Minimum	120PPM
Selenium	Minimum	0.6PPM
Vitamin A	Minimum	5200 IU/LB
Vitamin D3	Minimum	500 IU/LB
Vitamin E	Minimum	100 IU/LB

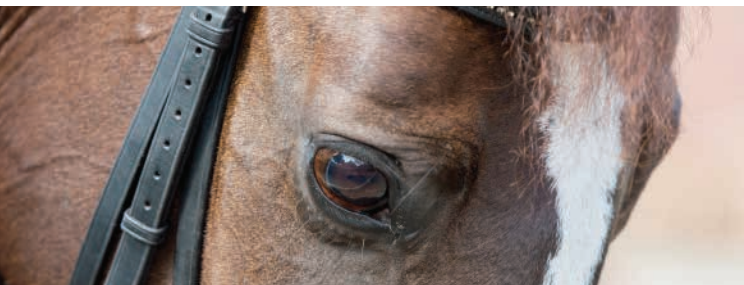
Wheat middlings, dehydrated alfalfa meal, ground oats, soybean hulls, distillers dried grains, ground corn, soybean oil, defluorinated phosphate, calcium carbonate, L-lysine, dried molasses, salt, dl-methionine, magnesium oxide, zinc amino acid chelate, iron amino acid chelate, ferrous sulfate, manganese sulfate, manganese amino acid chelate, copper sulfate, copper amino acid chelate, ethylenediamine dihydriodide, cobalt sulfate, sodium selenite, d-alpha tocopherol acetate(vitamin E), vitamin A supplement, vitamin D3 supplement, vitamin E supplement, menadione sodium bisulfite complex, riboflavin supplement, calcium pantothenate, choline chloride, niacin supplement, vitamin B12 supplement, biotin, folic acid, pyridoxine hydrochloride, thiamine mononitrate, lactobacillus acidophilus, enterococcus faecium, lactobacillus brevis, lactobacillus plantarum, pediococcus acidilacticii, yeast culture, yeast culture, natural and artificial feed flavors.



SPECIAL NEEDS BLENDS

- Designed to meet specific and special needs for horses of varying lifestyles
- Senior feeds for older horses designed to meet specific nutrient needs
- Fortified with higher vitamin levels
- Feeds can be fed alone or with forage
- Designed to provide high quality alfalfa and beet pulp based fiber
- Fiber utilization is ideal for the older horse
- Specific feeds for varying metabolic challenges

Special Needs horses including overweight, obese, senior, and carbohydrate-sensitive horses, have unique nutritional needs. Their specific dietary needs are met by formulating each product based on the individual horse's unique nutritional needs.



SENIOR NEEDS®

LIFESTYLE: MATURE

A textured feed composed of readily digested feed ingredients including several that are flaked. It is fortified to support digestion, enhance the immune system and benefit skeletal strength in older horses.

GUARANTEED ANALYSIS

Crude Protein Minimum 13.00%
Lysine Minimum 0.60%
Crude Fat Minimum 6.00%
Crude Fiber Maximum 13.00%
ADF Maximum 16.00%
NDF Maximum 30.50%
Calcium Minimum 0.90%
Calcium Maximum 1.40%
Phosphorus Minimum 0.60%
Copper Minimum 65ppm
Zinc Minimum 220ppm
Selenium Minimum 0.7ppm
Vitamin A Minimum IU/Lb 7,000
Vitamin D3 Minimum IU/Lb 700
Vitamin E Minimum IU/Lb 75

Soybean hulls, wheat middlings, whole oats, steam rolled barley, cane molasses, shredded beet pulp, dehydrated alfalfa meal, soybean meal, soybean oil, steam rolled corn, maize distillers dried grains, defluorinated phosphate, calcium carbonate, salt, L-lysine, magnesium oxide, zinc amino acid chelate, iron amino acid chelate, ferrous sulfate, manganese sulfate, manganese amino acid chelate, copper sulfate, copper amino acid chelate, ethylenediamine dihydride, cobalt sulfate, sodium selenite, selenium yeast, vitamin A supplement, vitamin D3 supplement, vitamin E supplement, menadione sodium bisulfite complex, riboflavin supplement, calcium pantothenate, choline chloride, niacin supplement, vitamin B12 supplement, biotin, folic acid, pyridoxine hydrochloride, thiamine mononitrate, dried lactobacillus acidophilus fermentation product, dried enterococcus faecium fermentation product, dried lactobacillus brevis fermentation product, dried lactobacillus plantarum fermentation product, dried pediococcus acidilacticii fermentation product, yeast culture, natural and artificial feed flavors.



CARBOLYTE®

LIFESTYLE: EASY KEEPER

CarbolYTE® is a low starch and sugar feed that is designed for horses that need to limit intake of readily digested carbohydrates like starch. It is composed of ingredients to minimize starch levels while optimizing other nutrient levels.

GUARANTEED ANALYSIS

Crude Protein	Minimum	12.00%
Lysine	Minimum	0.50%
Crude Fat	Minimum	6.00%
Crude Fiber	Maximum	20.00%
ADF	Maximum	25.50%
NDF	Maximum	43.00%
Calcium	Minimum	0.80%
Calcium	Maximum	1.30%
Phosphorus	Minimum	0.65%
Copper	Minimum	50ppm
Zinc	Minimum	150ppm
Selenium	Minimum	0.60ppm
Vitamin A	Minimum IU/Lb	4,000
Vitamin D3	Minimum IU/Lb	600
Vitamin E	Minimum IU/Lb	125

Soybean hulls, wheat middlings, dehydrated alfalfa meal, soybean oil, dried molasses, defluorinated phosphate, calcium carbonate, salt, L-lysine, magnesium oxide, zinc amino acid chelate, iron amino acid chelate, ferrous sulfate, manganese sulfate, manganese amino acid chelate, copper sulfate, copper amino acid chelate, ethylenediamine dihydride, cobalt sulfate, sodium selenite, vitamin A supplement, vitamin D3 supplement, vitamin E supplement, menadione sodium bisulfite complex, riboflavin supplement, calcium pantothenate, choline chloride, niacin supplement, vitamin B12 supplement, biotin, folic acid, pyridoxine hydrochloride, thiamine mononitrate, dried lactobacillus acidophilus fermentation product, dried enterococcus faecium fermentation product, dried lactobacillus brevis fermentation product, dried lactobacillus plantarum fermentation product, dried pediococcus acidilacticii fermentation product, yeast culture, natural and artificial feed flavors.



SENIORITY®

LIFESTYLE: MATURE

An economical feed for your senior horse, with adequate fortification to support their immune system.

This textured feed is high in fiber, making it a good choice for the senior horse that has trouble cleaning up roughage. Increased protein levels help maintain muscle and hoof quality. Alfalfa pellets in this feed add calories without causing hot behavior. Seniority® is a good option for horses that will not eat a pellet.

GUARANTEED ANALYSIS

Crude Protein	Minimum	13.00%
Lysine	Minimum	0.60%
Crude Fat	Minimum	6.00%
Crude Fiber	Maximum	14.50%
ADF	Maximum	15.00%
NDF	Maximum	25.00%
Calcium	Minimum	0.70%
Calcium	Maximum	1.10%
Phosphorus	Minimum	0.60%
Copper	Minimum	50ppm
Zinc	Minimum	150ppm
Selenium	Minimum	0.6ppm
Vitamin A	Minimum IU/Lb	5,000
Vitamin D3	Minimum IU/Lb	500
Vitamin E	Minimum IU/Lb	50

Whole oats, shredded beet pulp, cracked corn, dehydrated alfalfa meal, cane molasses, wheat middlings, soybean oil, soybean hulls, maize distillers dried grains, defluorinated phosphate, calcium carbonate, salt, magnesium oxide, zinc sulfate, manganese sulfate, copper sulfate, zinc proteinate, manganese proteinate, copper proteinate, iron sulfate, cobalt sulfate, ethylenediamine dihydride, L-lysine, vitamin A supplement, vitamin D3 supplement, vitamin E supplement, yeast culture, menadione sodium bisulfite complex, choline chloride, riboflavin, calcium pantothenate, niacin, biotin, folic acid, thiamine mononitrate, pyridoxine hydrochloride, vitamin B12 supplement, dried lactobacillus acidophilus fermentation product, dried enterococcus faecium fermentation product, dried lactobacillus brevis fermentation product, dried lactobacillus plantarum fermentation product, dried pediococcus acidilacticii fermentation product, yeast culture, natural and artificial feed flavors.



SENIOR PLUS®

LIFESTYLE: MATURE

The ideal feed to help your thin horse that struggles to maintain body weight. High in fat and fiber and in pelleted form to ease consumption.

This pelleted feed is ideal for senior horses that need high fat and fiber content to maintain their weight. If your senior horse is a hard keeper, Senior Plus® is an excellent choice. It has low added molasses and is only 10% starch, a good option for horses that are insulin-resistant.

GUARANTEED ANALYSIS

Crude Protein	Minimum	13.00%
Lysine	Minimum	0.50%
Crude Fat	Minimum	10.00%
Crude Fiber	Maximum	20.00%
ADF	Maximum	21.00%
NDF	Maximum	37.00%
Calcium	Minimum	1.00%
Calcium	Maximum	1.40%
Phosphorus	Minimum	0.60%
Copper	Minimum	50ppm
Zinc	Minimum	150ppm
Selenium	Minimum	0.6ppm
Vitamin A	Minimum IU/Lb	4,000
Vitamin D3	Minimum IU/Lb	500
Vitamin E	Minimum IU/Lb	150

Soybean hulls, wheat middlings, dehydrated alfalfa meal, soybean oil, soybean meal, cane molasses, maize distillers dried grains, defluorinated phosphate, calcium carbonate, salt, L-lysine, magnesium oxide, zinc amino acid chelate, iron amino acid chelate, ferrous sulfate, manganese sulfate, manganese amino acid chelate, copper sulfate, copper amino acid chelate, ethylenediamine dihydriodide, cobalt sulfate, sodium selenite, yeast culture, vitamin A supplement, vitamin D3 supplement, vitamin E supplement, menadione sodium bisulfite complex, riboflavin supplement, calcium pantothenate, choline chloride, niacin supplement, vitamin B12 supplement, biotin, folic acid, pyridoxine hydrochloride, thiamine mononitrate, dried lactobacillus acidophilus fermentation product, dried enterococcus faecium fermentation product, dried lactobacillus brevis fermentation product, dried lactobacillus plantarum fermentation product, dried pediococcus acidilacticii fermentation product, yeast culture, natural and artificial feed flavors.



PROFORMANCE SALES PREP®

LIFESTYLE: SALE PREPARATION

The right protein and fat content to keep your young horse growing with the proper condition and bloom for sale day.

A high percentage of fat as well as beet pulp helps give a horse a little extra bloom before performance. This feed includes flaked barley, flaked corn and higher level of Vitamin E.

GUARANTEED ANALYSIS

Crude Protein	Minimum	14.00%
Lysine	Minimum	0.75%
Crude Fat	Minimum	10.00%
Crude Fiber	Maximum	10.00%
ADF	Maximum	12.00%
NDF	Maximum	23.00%
Calcium	Minimum	0.90%
Calcium	Maximum	1.30%
Phosphorus	Minimum	0.60%
Copper	Minimum	70ppm
Zinc	Minimum	200ppm
Selenium	Minimum	0.7ppm
Vitamin A	Minimum IU/Lb	6,500
Vitamin D3	Minimum IU/Lb	700
Vitamin E	Minimum IU/Lb	100

Whole oats, shredded beet pulp, wheat middlings, steam rolled barley, soybean meal, dehydrated alfalfa meal, steam rolled corn, defluorinated phosphate, soybean oil, calcium carbonate, salt, monocalcium phosphate, dicalcium phosphate, zinc sulfate, zinc proteinate, ferrous sulfate, iron proteinate, manganese sulfate, manganese proteinate, copper sulfate, copper proteinate, ethylenediamine dihydriodide, cobalt sulfate, menadione sodium bisulfite complex (source of vitamin k), choline chloride, d-calcium pantothenate, selenium yeast, vitamin A supplement, vitamin D3 supplement, vitamin E supplement, mineral oil, vitamin B12 supplement, riboflavin supplement, biotin supplement, pyridoxine hydrochloride, L-lysine, niacin supplement, folic acid, thiamine mononitrate, dried lactobacillus acidophilus fermentation product, dried enterococcus faecium fermentation product, dried lactobacillus brevis fermentation product, dried lactobacillus plantarum fermentation product, dried pediococcus acidilacticii fermentation product, yeast culture, natural and artificial feed flavors.



ENRICHMENT[®]

LIFESTYLE: ALL LIFESTYLES

A palatable ration balancer designed to provide added vitamins, minerals and high-quality protein.

Feed as a top dress to increase nutritional content of an unbalanced feed or alone as a source of nutrition with little calories.

GUARANTEED ANALYSIS

Crude Protein	Minimum	27.00%
Lysine	Minimum	2.00%
Crude Fat	Minimum	3.00%
Crude Fiber	Maximum	6.00%
ADF	Maximum	8.50%
NDF	Maximum	20.00%
Calcium	Minimum	2.60%
Calcium	Maximum	3.20%
Phosphorus	Minimum	1.50%
Copper.....	Minimum	200ppm
Zinc	Minimum	600ppm
Selenium	Minimum	2.0ppm
Vitamin A.....	Minimum IU/Lb	20,000
Vitamin D3	Minimum IU/Lb	5,000
Vitamin E	Minimum IU/Lb	500
Biotin	Minimum	1.50 mg/lb

Soybean meal, wheat middlings, defluorinated phosphate, calcium carbonate, maize distillers dried grains, biotin, stabilized rice bran, dehydrated alfalfa meal, salt, magnesium oxide, zinc sulfate, manganese sulfate, copper sulfate, zinc proteinate, manganese proteinate, copper proteinate, iron sulfate, cobalt sulfate, ethylenediamine dihydride, L-lysine, vitamin A supplement, vitamin D3 supplement, vitamin E supplement, menadione sodium bisulfite complex, choline chloride, riboflavin, calcium pantothenate, niacin, folic acid, thiamine mononitrate, pyridoxine hydrochloride, vitamin B12 supplement, selenium yeast, yeast culture, dried lactobacillus acidophilus fermentation product, dried enterococcus faecium fermentation product, dried lactobacillus brevis fermentation product, dried lactobacillus plantarum fermentation product, dried pediococcus acidilacticii fermentation product, yeast culture, natural and artificial feed flavors.



FIBER FIRST[®]

LIFESTYLE: TRAINING

As the name implies, fiber content is high in this feed thanks to increased beet pulp content. Its high fat content makes Fiber First[®] a safe source of calories and energy. This feed is an ideal choice for horses that struggle with tying up and also for horses with COPD because it also allows them to consume less hay.

GUARANTEED ANALYSIS

Crude Protein	Minimum	12.00%
Lysine	Minimum	0.60%
Crude Fat	Minimum	8.00%
Crude Fiber	Maximum	15.00%
ADF	Maximum	14.50%
NDF	Maximum	26.00%
Calcium	Minimum	1.00%
Calcium	Maximum	1.40%
Phosphorus	Minimum	0.60%
Copper.....	Minimum	55ppm
Zinc	Minimum	190ppm
Selenium	Minimum	0.60ppm
Vitamin A.....	Minimum IU/Lb	6,000
Vitamin D3	Minimum IU/Lb	700
Vitamin E	Minimum IU/Lb	100

Shredded beet pulp, soybean hulls, cane molasses, wheat middlings, soybean meal, soybean oil, cracked corn, dehydrated alfalfa meal, maize distillers dried grains, defluorinated phosphate, calcium carbonate, salt, L-lysine, magnesium oxide, zinc amino acid chelate, iron amino acid chelate, ferrous sulfate, manganese sulfate, manganese amino acid chelate, copper sulfate, copper amino acid chelate, ethylenediamine dihydride, cobalt sulfate, sodium selenite, selenium yeast, vitamin A supplement, vitamin D3 supplement, vitamin E supplement, menadione sodium bisulfite complex, riboflavin supplement, calcium pantothenate, choline chloride, niacin supplement, vitamin B12 supplement, biotin, folic acid, pyridoxine hydrochloride, thiamine mononitrate, dried lactobacillus acidophilus fermentation product, dried enterococcus faecium fermentation product, dried lactobacillus brevis fermentation product, dried lactobacillus plantarum fermentation product, dried pediococcus acidilacticii fermentation product, yeast culture, natural and artificial feed flavors.



SENIOR HF®

LIFESTYLE: MATURE

Senior HF® is a special needs textured feed that is designed for horses that are geriatric or horses that need a source of safe palatable calories. It is composed of safe, digestible fiber sources. Senior HF® works very well for those senior horses that are still competing or those mature horses that need a source of safe calories while they try to put weight back on.

GUARANTEED ANALYSIS

Crude Protein	Minimum	14.00%
Lysine	Minimum	0.80%
Crude Fat	Minimum	10.00%
Crude Fiber	Maximum	17.00%
ADF	Maximum	19.00%
NDF	Maximum	34.00%
Calcium	Minimum	0.90%
Calcium	Maximum	1.40%
Phosphorus	Minimum	0.60%
Copper	Minimum	55ppm
Zinc	Minimum	170ppm
Selenium	Minimum	0.50ppm
Vitamin A	Minimum IU/Lb	7,000
Vitamin D3	Minimum IU/Lb	1,000
Vitamin E	Minimum IU/Lb	170

Soybean hulls, wheat middlings, shredded beet pulp, dehydrated alfalfa meal, soybean oil, cane molasses, soybean meal, maize distillers dried grains, defluorinated phosphate, calcium carbonate, salt, L-lysine, zinc sulfate, zinc proteinate, ferrous sulfate, iron proteinate, manganese sulfate, manganese proteinate, copper sulfate, copper proteinate, ethylenediamine dihydriodide, cobalt sulfate, menadione sodium bisulfite complex (source of vitamin k), choline chloride, d-calcium pantothenate, yeast culture, selenium yeast, vitamin A supplement, vitamin D3 supplement, vitamin E supplement, vitamin B12 supplement, riboflavin supplement, biotin supplement, pyridoxine hydrochloride, niacin supplement, folic acid, thiamine mononitrate, dried lactobacillus acidophilus fermentation product, dried enterococcus faecium fermentation product, dried lactobacillus brevis fermentation product, dried lactobacillus plantarum fermentation product, dried pediococcus acidilacticii fermentation product, yeast culture, natural and artificial feed flavors.



EXCEL EQUINE® Supplement Blends

Our new supplement line provides optimal nutrition as we combine minerals, vitamins, fats, proteins and fibers to address common health concerns like digestive or feeding problems and skin conditions.

Our supplements are composed of high quality palatable ingredients which allows them to be easily mixed into the daily feed. As we continue to develop new supplements to address specific health concerns like digestive challenges, skin conditions and hoof health.



HOOF PRO PLUS®



LIFESTYLE: ALL LIFESTYLES

Hoof Pro Plus® is a favorite for strengthening horses' hooves. It helps to thicken hoof walls, prevent hoof cracks and improve hoof growth. The small pellet blends into any type of feed so that horses are less likely to sort it out.

GUARANTEED ANALYSIS

Crude Protein	Minimum	14.00%
Lysine	Minimum	0.65%
Crude Fat	Minimum	4.00%
Crude Fiber	Maximum	14.00%
ADF	Maximum	14.50%
NDF	Maximum	31.50%
Calcium	Minimum	0.25%
Calcium	Maximum	0.75%
Phosphorus	Minimum	0.40%
Copper	Minimum	650 ppm
Zinc	Minimum	2,400 ppm
Selenium	Minimum	0.9 ppm
Vitamin A	Minimum IU/Lb	5,000
Vitamin E	Minimum IU/Lb	40
Biotin	Minimum mg/Lb	136
Methionine	Minimum	3.55%

Grain products, processed grain by-products, forage products, soybean oil, calcium carbonate, monosodium phosphate, monocalcium phosphate, dicalcium phosphate, salt, L-lysine, DL-methionine, zinc sulfate, zinc proteinate, zinc methionine complex, ferrous sulfate, iron proteinate, manganese, sulfate, manganese proteinate, copper sulfate, copper proteinate, ethylenediamine dihydride, cobalt sulfate, menadione sodium bisulfite complex (source of Vitamin K), choline chloride, calcium d-pantothenate, selenium yeast, brewer's dried yeast, yeast culture, hydrated sodium calcium aluminosilicate, vitamin A supplement, vitamin D3 supplement, d-alpha tocopherol acetate (source of vitamin E), vitamin B12 supplement, riboflavin supplement, biotin supplement, pyridoxine hydrochloride, niacin supplement, folic acid, thiamine mononitrate, natural and artificial feed flavors.



Hoof Pro Plus® is sold in
20 lb. buckets

EQUILISTIC®



LIFESTYLE: ALL LIFESTYLES

Equilistic® is a proprietary formula that is helpful for horses that are prone to digestive upset, including those that are prone to diarrhea, gas colic and ulcerative conditions. These subtle digestive challenges in the horse's gut can cause the horse to go off feed and can compromise athletic performance. Equilistic® is formulated with a variety of nutritional sources of calcium. These include a unique source of marine derived bioavailable calcium, alfalfa meal, yeast cultures and direct fed microbials, each of which can have a positive influence on gut health.

GUARANTEED ANALYSIS

Crude Protein	Minimum	10.0%
Crude Fat	Minimum	2.5%
Crude Fiber	Maximum	11.0%
ADF	Maximum	14.00%
NDF	Maximum	25.00%
Calcium	Minimum	3.5%
Calcium	Maximum	4.5%
Phosphorus	Minimum	2.0%
Copper	Minimum	35 ppm
Zinc	Minimum	120ppm
Total Microbial Count	Minimum CFU/lb	1,000,000

(Lactobacillus acidophilus, Enterococcus faecium, Lactobacillus brevis, Lactobacillus plantarum, Pediococcus acidilacticii)

Dehydrated alfalfa meal, wheat middlings, seaweed-derived calcium, defluorinated phosphorus, dried molasses, yeast culture, zinc amino acid chelate, copper amino acid chelate, iron amino acid chelate, dried lactobacillus acidophilus fermentation product, dried enterococcus faecium fermentation product, dried lactobacillus brevis fermentation product, dried lactobacillus plantarum fermentation product, dried pediococcus acidilacticii fermentation product.



Equilistic® is sold in
20 lb. buckets

EQUIGLEAM®



LIFESTYLE: ALL LIFESTYLES

Equigleam® is a proprietary formula that may be helpful for horses' hair, coat, and skin. Horses are exposed to various fungal or bacterial challenges with changes in season and environment. They can come in contact with several allergens including those that are airborne, some that are respired in and also those that contact the horse's skin. Inadequate intake of nutrients essential for skin health can also be a factor if the horse's diet is not designed for its lifestyle or work. Equigleam® is formulated to enhance Omega-3 fatty acid intakes and promote healthy skin and hair condition in all horses.

GUARANTEED ANALYSIS

Crude Protein	Minimum	8.00%
Crude Fat	Minimum	40.00%
Crude Fiber	Maximum	10.00%
ADF	Maximum	5.00%
NDF	Maximum	5.50%
Calcium	Minimum	0.8%
Calcium	Maximum	1.2%
Phosphorus	Minimum	1.0%
Omega-3 DHA	Minimum	15.0%

Marine micro-algae rice bran, yeast culture, natural and artificial flavors.



Equigleam® is sold in 2 lb. tubs

EQUIEDGE®



LIFESTYLE: ALL LIFESTYLES

EquiEdge®, a healthy fat supplement, is a new product, also offered in a pelleted format. It differs from other fat supplements in that it has two sources of healthy fats, rice bran and ground flax. Fat supplements have traditionally been thought of as a source for extra calories for horses that are older or are hard keepers, but studies show that healthy fats like rice bran and ground flax can also improve behavior and greatly enhance the health of a horse's skin and coat.

GUARANTEED ANALYSIS

Crude Protein	Minimum	12.00%
Crude Fat	Minimum	18.00%
Crude Fiber	Maximum	13.00%
ADF	Maximum	4.00%
NDF	Maximum	4.50%
Calcium	Minimum	2.30%
Calcium	Maximum	2.80%
Phosphorus	Minimum	1.50%

Stabilized rice bran, ground flaxseed and calcium carbonate



EquiEdge® is sold in 50-lb. bags

LEVEL OUT®



LIFESTYLE: ALL LIFESTYLES

Level Out® is a healthy horse treat made with a proprietary formula. Horses can develop digestive upset which can cause the horse to go off feed which can affect the horse's behavior and even affect performance. Level Out® is formulated with a several ingredients that have a positive effect of the horse's digestive system. These include probiotics, prebiotics, calcium buffering agents and natural vitamin E. All in the form of an easy to feed healthy treat. Contains a source of viable naturally occurring microorganisms.

GUARANTEED ANALYSIS

Crude Protein	Minimum.....	14.0%
Lysine	Minimum.....	0.90%
Crude Fat	Minimum.....	3.0%
Crude Fiber	Maximum.....	10.0%
ADF	Maximum.....	12.0%
NDF	Maximum.....	16.0%
Calcium	Minimum.....	0.90%
Calcium	Maximum.....	1.50%
Phosphorus	Minimum.....	60%
Copper.....	Minimum.....	50 ppm
Zinc	Minimum.....	85ppm
Selenium	Minimum.....	30ppm
Vitamin A.....	Minimum IU/lb	6,000
Vitamin D.....	Minimum IU/lb	1,000
Vitamin E	Minimum IU/lb	500
Total Microbial Count.....	Minimum CFU/lb.....	1,000,000
(Lactobacillus acidophilus, Enterococcus faecium, Lactobacillus brevis, Lactobacillus plantarum, Pediococcus acidilacticii)		

Wheat middlings, seaweed-derived calcium, ground oats, soybean meal, dehydrated alfalfa meal, soybean hulls, maize distillers dried grains, calcium carbonate, defluorinated phosphorus, dried molasses, yeast culture, salt, soybean oil, zinc amino acid chelate, iron amino acid chelate, ferrous sulfate, manganese sulfate, zinc sulfate, manganese amino acid chelate, copper sulfate, copper amino acid chelate, ethylenediamine dihydride, cobalt sulfate, sodium selenite, vitamin A supplement, vitamin D3 supplement, natural vitamin E, vitamin E supplement, menadione sodium bisulfite complex, riboflavin supplement, calcium pantothenate, choline chloride, niacin supplement, vitamin B12 supplement, biotin, folic acid, pyridoxine hydrochloride, thiamine mononitrate, dried lactobacillus acidophilus fermentation product, dried enterococcus faecium fermentation product, dried lactobacillus brevis fermentation product, dried lactobacillus plantarum fermentation product, dried pediococcus acidilacticii fermentation product, natural and artificial feed flavors.

Level Out® is sold in 3.5 lb. tubs



TOPLYTE®



LIFESTYLE: ALL LIFESTYLES

Toplyte® is an equine supplement that is eye-catching, contains ingredients visible to the eye, enhances the palatability of any feed mix, and provides a natural source of electrolytes. Toplyte® is formulated with natural ingredients, such as dehydrated carrots and salt, and natural nutrients such as potassium, sodium, chloride, and magnesium, that have a positive effect on the horse's electrolyte balance. Toplyte® is easy to feed and can be supplemented with any equine feed.

GUARANTEED ANALYSIS

Crude Protein	Minimum.....	6.00%
Crude Fat	Minimum.....	8.00%
Crude Fiber	Minimum.....	18.00%
ADF	Maximum.....	2.00%
NDF	Maximum.....	4.00%
Calcium	Minimum.....	0.20%
Calcium	Maximum.....	0.40%
Phosphorus	Minimum.....	0.30%
Copper.....	Minimum.....	8 ppm
Zinc	Minimum.....	4 ppm
Salt	Minimum.....	7.00%
Salt	Maximum.....	8.00%
Potassium	Minimum.....	2.50%
Magnesium	Minimum.....	0.20%

Dehydrated carrots, dried molasses, salt, soybean oil.



Toplyte® is sold in 18 lb. buckets

PRODUCT SOLUTIONS

PAGE
NUMBER

PERFORMANCE HORSES

Race First®	Multiple energy sources	10
Performance 12®	High fat levels	7
Fiber First®	Added Vitamins	11,41
Trifiber Balance®	Balanced energy sources	26
Triplify®	Energy balanced for optimal performance	24
Fortify®		12,23
Proformance 14®		28
Stability®		8,22
Trifiber Compete®	Multiple energy sources	13

BREEDING HORSES

Stability®	Vitamin balanced for breeding	8,22
Proformance 16®	Mineral balanced for breeding	30
Quick®	Highly digestible ingredients	31
Proformance Sales Prep®		39
Proformance 14®		28
Excel Equine 15®		29
Enrichment®		40
Fortify®		12,23

SALES PREP

Proformance Sales Prep®	Provides bloom	39
Triplify®	Optimal fat sources	24
Fortify®	Digestible beet pulp	12,23
Stability®		8,22
Fiber First®		11,41
Animate®		25
Trifiber Compete®	Elevated fat	13

CARBOHYDRATE CHALLENGES/OVERWEIGHT

Carbolyte®	Low starch	36
Enrichment®	Controlled calories	40

UNDERWEIGHT

Trifiber Balance®	Safe and digestible	26
Fortify®	Safe calories from fat	12,23
Triplify®	Safe calories from fiber	24
Performance 12®		7
Fiber First®		11,41
Trifiber Compete®	Elevated fat	13

SUCKLING FOALS

Quick®	Milk-based product	31
	Supplements mare's milk	

PASTURE PETS

Enrichment®	Controlled calories	40
Carbolyte®	Balanced for small feeding intakes	36

SENIOR HORSES

Senior Plus®	Quality Fiber Sources	38
Senior Needs®	Meets higher nutritional needs of older horses	35
Seniority®	Fed with or without hay	37
Senior HF®		42

HYPERACTIVE HORSES

Fiber First®	Multiple calorie sources	11,41
Trifiber Balance®	High fat and quality fiber sources	26
Animate®	Calming effect of higher fat content	25
Carbolyte®	Calming effect of low starch intakes	36
Performance 12®		7

MUSCLE CHALLENGES/(TYING UP/EPSPM)

Carbolyte®	Multiple energy sources	36
Performance 12®	Fat helps to reduce tying up symptoms	7
Race First®	Low starch helps to reduce muscle issues	11
Animate®	Optimal Vitamin levels	25
Senior Plus®	Added Vitamin E	38
Fiber First®	Added Antioxidants	11,41
Enrichment®		40

DEVELOPMENTAL ORTHOPEDIC CONDITIONS

Quick®	Highly available mineral sources for bone development	31
Enrichment®	Helps control growth rates	40
Stability®		8,22

CERVICAL VERTEBRA MALFUNCTION/WOBBLER

Enrichment®	Controlled growth rates	40
Excel Equine 15®	Optimal Vitamin and mineral levels	29

GASTRIC CONDITIONER

Equilistic®	Added buffers for gut health	45
Level Out®	Added gut conditioning for gut health	48

SKIN CONDITIONS

Equigleam®	Added Omega-3 fatty acids for healthy skin/hair	46
------------------	---	----

LAMINITIS/FOUNDER

Carbolyte®	Balanced calorie sources	36
Enrichment®	Low starch and carbohydrates	40
Senior Plus	Optimal nutrition with safe calories.....	38
Fiber First®		11,41
Animate®		25
Trifiber Compete®	Low starch	13

DIGESTIVE UPSET/COLIC

Trifiber Balance®	Quality fiber sources	26
Senior Plus®	Higher fiber to help buffer gut.....	38
Senior Needs®	Lower feeding rates	35
Enrichment®	Controlled carbohydrates	40
Carbolyte®	Optimal Vitamin and mineral nutrition.....	36
Trifiber Compete®	High quality fiber.....	13

CUSHING

Carbolyte®	High quality nutritional package.....	36
Enrichment®	Digestible calories from fat.....	40
Senior Plus®	Low starch and carbohydrate loads.....	38
Trifiber Compete®		13

HYPP/POTASSIUM INTOLERANCE

Enrichment®		40
-------------------	--	----

COPD/HEAVES

Fiber First®	High quality fiber source.....	11,41
Senior Plus®	Higher Vitamin levels for..... anti-inflammatory response	38
Trifiber Compete®	Calming effect of higher fat content.....	13
Carbolyte®		36

HOOF CARE

Hoof Pro Plus®	Added biotin, methionine	44
----------------------	--------------------------------	----

FAT SUPPLEMENT

EquiEdge®	Healthy sources of fat for safe calories.....	47
-----------------	---	----

For more information or ordering
details please contact:

EXCEL EQUINE

165 N. CLAY STREET, LOUISVILLE, KY 40202
(800) 295-2836 OR (502) 587-6606
INFO@EXCELEQUINEFEEDS.COM
EXCELEQUINEFEEDS.COM



To find local retailers in your area,
visit ExcelEquineFeeds.com